



THE SAND BLUFF ESTATE | GUN BAY, EAST END

District: East End, Cayman Islands

MLS# 414483

Beds: 5

Status: Current

Price: US\$19,900,000

Type: Residential

Baths: 5.5



HIDDEN TREASURE - FRANK SOUND BEACH FRONT ESTATE

District: East End, Cayman Islands

MLS# 415529

Beds: 5

Status: Current

Price: US\$4,299,000

Type: Residential

Baths: 4.5



SAND BLUFF - EAST END ACREAGE

District: East End, Cayman Islands

MLS# 417584

Width: 523

Status: Current

Price: CI\$3,100,000

Type: Land

Depth: 1,460



THE BLOW HOLES DEVELOPMENT.

District: East End, Cayman Islands

MLS# 415805

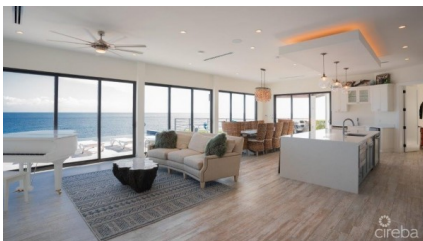
Width: 771

Status: Current

Price: CI\$2,950,000

Type: Land

Depth: 3,000



BELLA VISTA - UNPARALLELED OCEAN VIEWS

District: East End, Cayman Islands

MLS# 413539

Beds: 5

Status: Current

Price: US\$3,549,000

Type: Residential

Baths: 7



PISCES BAY UNIT 404

District: East End, Cayman Islands

MLS# 417514

Beds: 3

Status: Current

Price: US\$3,029,400

Type: Residential

Baths: 3



PISCES BAY OCEAN FRONT RESIDENCES #401

District: East End, Cayman Islands

MLS# 417482

Beds: 3

Status: Current

Price: US\$2,989,800

Type: Residential

Baths: 3



FRANK SOUND - PERFECT BEACHFRONT PARCEL

District: East End, Cayman Islands

Price: CI\$2,100,000

MLS# 415172

Type: Land

Width: 200

Depth: 300

Status: Current



5 ADJOINING LOTS IN HALF MOON BAY (LOTS 2-6)

District: East End, Cayman Islands

Price: CI\$1,900,000

MLS# 417440

Type: Land

Width: 571

Depth: 124

Status: Current



PISCES BAY OCEANFRONT RESIDENCE

District: East End, Cayman Islands

Price: US\$1,885,600

MLS# 417758

Type: Residential

Beds: 3

Baths: 3

Status: Current



CAYMAN CHILLIN

District: East End, Cayman Islands

Price: US\$1,795,000

MLS# 417356

Type: Residential

Beds: 3

Baths: 2

Status: Current



STARFISH | BEACHFRONT LAND, FRANK SOUND

District: East End, Cayman Islands

Price: US\$1,495,000

MLS# 415755

Type: Land

Width: 100

Depth: 310

Status: Current



EAST END 17 ACRES, WELL ELEVATED

District: East End, Cayman Islands

Price: CI\$1,200,000

MLS# 417678

Type: Land

Width: 555

Depth: 1,794

Status: Current



IMAGE COMING SOON

NORTH SIDE CONDOS - FOURPLEX - 2 BED / 2 BATH

District: East End, Cayman Islands

Price: CI\$1,150,000

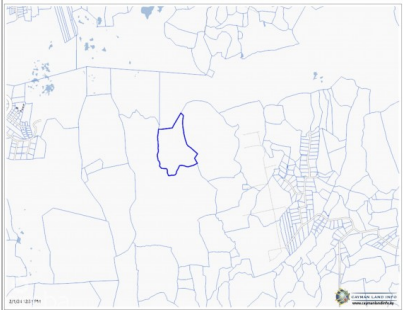
MLS# 417467

Type: Multi-Unit

Beds: 8

Baths: 8

Status: Current



EXQUISITE 43-ACRE LAND BORDERING SALINA'S RESERVE

District: East End, Cayman Islands

Price: CI\$1,100,000

MLS# 417286

Type: Land

Width: 1,070

Depth: 2,253

Status: Current



IMAGE COMING SOON

SILVER REEF RESIDENCES UNIT 4

District: East End, Cayman Islands

Price: CI\$1,049,000

MLS# 417341

Type: Residential

Beds: 2

Baths: 2

Status: Current



VILLA TOSCANA 4 BEDROOM PRIVATE PALAZZO AT COTTAGE BEACH

District: East End, Cayman Islands

Price: CI\$999,000

MLS# 415840

Type: Residential

Beds: 4

Baths: 3

Status: Current



BREAKERS 2.63, WELL ELEVATED SUBDIVISION

District: East End, Cayman Islands

Price: CI\$998,000

MLS# 417355

Type: Land

Width: 181

Depth: 845

Status: Reduced



IMAGE COMING SOON

SILVER REEF RESIDENCES #3

District: East End, Cayman Islands

Price: CI\$939,000

MLS# 417345

Type: Residential

Beds: 2

Baths: 2

Status: Current



IMAGE COMING SOON

SILVER REEF RESIDENCES UNIT 1

District: East End, Cayman Islands

Price: CI\$890,000

MLS# 417902

Type: Residential

Beds: 2

Baths: 2

Status: New



BEACH FRONT SEMI DETACHED COTTAGE - OLD MAN BAY "JASMINE COTTAGE"

District: East End, Cayman Islands

Price: CI\$775,000

MLS# 415677

Type: Residential

Beds: 3

Baths: 3

Status: Current



IMAGE COMING SOON

NORTH SIDE CONDOS - FOURPLEX - 1 BED / 1 BATH

District: East End, Cayman Islands

Price: CI\$615,600

MLS# 417468

Type: Multi-Unit

Beds: 4

Baths: 4

Status: Current



SEAVIEW ROAD LAND WITH CAYMANIAN COTTAGE

District: East End, Cayman Islands

Price: US\$699,000

MLS# 413932

Type: Land

Width: 196

Depth: 176

Status: Pen/Con



INDIANA LANE OCEANVIEW LAND 0.89 WITH STRUCTURE

District: East End, Cayman Islands

Price: CI\$525,000

MLS# 416854

Type: Land

Width: 274

Depth: 143

Status: Reduced



HIGH ROCK FARMLAND - 1 ACRE

District: East End, Cayman Islands

MLS# 416798

Width: 152

Status: Current

Price: CI\$495,000

Type: Land

Depth: 267



COMPASS POINT PHASE 1, UNIT 316

District: East End, Cayman Islands

MLS# 415903

Beds: 2

Status: Reduced

Price: US\$539,000

Type: Residential

Baths: 2



HIGH ROCK WATERFRONT LOT.

District: East End, Cayman Islands

MLS# 417273

Width: 87

Status: Current

Price: CI\$440,000

Type: Land

Depth: 283



OCEAN VISTA

District: East End, Cayman Islands

MLS# 412365

Beds: 2

Status: Current

Price: CI\$425,000

Type: Residential

Baths: 2.5



ELEVATED EAST END DEVELOPMENT PARCEL

District: East End, Cayman Islands

MLS# 417446

Width: 120

Status: Current

Price: US\$495,000

Type: Land

Depth: 250



IMAGE COMING SOON

LAND FOR SALE IN HALF MOON BAY, HIGH ROCK- LOT #2

District: East End, Cayman Islands

Price: CI\$400,000

MLS# 417796

Type: Land

Width: 143

Depth: 136

Status: Current
