
ALEXANDER GROVE SUBDIVISION - CAYMAN BRAC - LOT I (INLAND)

Cayman Brac, Cayman Islands

PROPERTY DETAILS

Price: CI\$42,400	MLS#: 415325	Type: Land
Listing Type: Low Density Residential	Status: Current	Width: 103.90
Depth: 111.30	Acres: 0.26	

PROPERTY DESCRIPTION

PRICE INCREASE IMMINENT! These parcels are expected to see an increase in pricing soon. All offers are encouraged to be placed before the 15th of August 2024 to benefit from the current pricing. Alexander Grove is Cayman Brac's newest proposed sub-division. The developers aim to create a beautiful community that owners will be proud to be a part of. As you enter the neighbourhood, you'll be met with a sweeping, hand-crafted double-stone wall entranceway to welcome you home. This property is one of 14 in-land parcels in an area, close to some of the best amenities the island has to offer. The location brags some of the island's best culinary experiences the Brac, including staple and traditional local cuisines from local restaurants and also fine dining, live music, and good company from The Alexander Hotel which is only a short stroll away. Your evenings are sure to be fun-filled! You are also within walking distance of the only stretch of beach on the island! Perfect for a quiet intimate stroll along a peaceful beach, with only the sound of the water rolling onto the reef to keep you and yours, company. You may be lucky enough to experience the occasional bio-luminescence light show as the waves lap along the shoreline! As you make your way to the beach, pick up your favorite beverage at the local fine wine and spirit stores, as you walk by. Are you Caymanian and a first-time buyer? - Opportunity to take advantage of Stamp Duty Wavier Program offered by Government. This is an excellent investment choice that is sure to increase in value due to its location. Get on the property ladder now! Investors, looking for a place to build the perfect vacation home on a soul-charming island? - With the above, you're in an excellent location for rentals when you're not there. (Developers are in the planning stages of neighbourhood covenants.)

PROPERTY FEATURES

Views	Inland
Block	97B
Parcel	15LOTI
Zoning	Low Density residential
Road Frontage	199.5

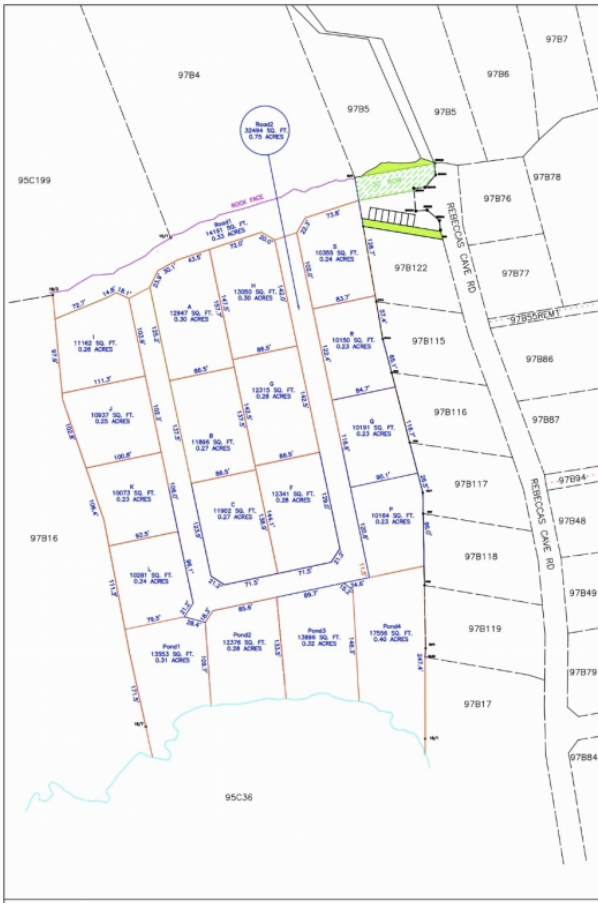
PRESENTED BY



Bettina Baldwin
+1-345-916-7766
bettina@paradisepropertiescayman.com

IMAGES





MODIFIED SUBDIVISION DESIGN OF BLOCK 97B, PARCEL 15.

Scale: 1/1250 Date:05.01.2023

All dimensions & areas have been derived from the L&S Dept. Registry Map DXF files, and are subject to final survey.

Notes



CATMAN SURVEY ASSOCIATES LTD.
 UNIT C1, CATMAN BUSINESS PARK
 17, BRIDGE RD.
 GEORGE TOWN, GRAND CAYMAN
 P.O. BOX 9128, KY1-1507
 TELEPHONE: (345)944-9122
 EMAIL: info@catmansurvey.ky