
FAMILY HOME W/ HUGE OUTDOOR KITCHEN IN SAVANNAH

Rackley Boulevard, Savannah, Cayman Islands

PROPERTY DETAILS

Price: CI\$799,000	MLS#: 417283	Type: Residential
Listing Type: Single Family Home	Status: Current	Bedrooms: 5
Bathrooms: 3	Built: 2000	
Sq. Ft.: 1661		

PROPERTY DESCRIPTION

Indoor/outdoor easy living in North Sound Estates with minimum yard maintenance requirements and loads of parking! This unique 5-bedroom home will delight the family buyer who loves entertaining! You have to see this enormous covered outdoor kitchen and Lanai-style entertaining area! A 30-foot countertop is appointed with a stainless steel 4 plate BBQ grill, large griddle, Kamada Joe 'Egg-shaped' smoker, 2-burner grill, multiple propane tank storage cupboards, and stainless steel cupboards and drawers for enjoying large informal gatherings. This gem of a family home has been extremely well-built with outside living and entertaining in the gentle Caribbean climate being of paramount importance. Inside you will find a gorgeous modern large kitchen showcasing gloss white cabinets by 'Woods Furniture' and high-end stainless steel Kitchen Aid appliances, a breakfast nook, and high ceilings! In addition, outside near the huge carport, there is a large 10x11 tool shed with shelving and 6 metal tool storage cabinets. Near the outdoor patio is another 12x15 annex housing the laundry facility with a powder room. From an investor's point of view, this home layout might work well as staff quarters that could sleep 5 couples and the outdoor living space would provide loads of private space and there is easily room for 10 cars in the various driveways. Accordion hurricane shutters throughout, two-zone Trane 16 seer a/c units, standing seam roof, two above-ground water tanks 900 gallons, two large carports, and generous parking for family and friends complete the package! Must be seen to be appreciated!

PROPERTY FEATURES

Views	Garden View
Block	27D
Parcel	55
Foundation	Slab
Zoning	Low Density residential
Furnished	Partially

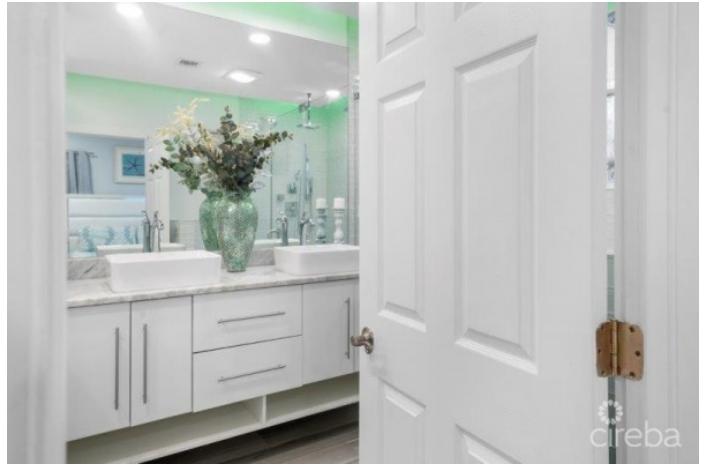
PRESENTED BY



Bettina Baldwin
+1-345-916-7766
bettina@paradisepropertiescayman.com

IMAGES











GROSS INTERNAL AREA
 FLOOR 1: 3,512 sq.ft. FLOOR 2: 288 sq.ft.
 EXCLUDED AREAS: PATIO 882 sq.ft., TERRACE 132 sq.ft., REDUCED HEIGHT ROOM 48 sq.ft.
 TOTAL: 3,800 sq.ft.
DEED AND ENCUMBRANCES ARE REPRESENTED BY A DOTTED LINE ONLY.

ENGEL & VÖLKERS

Matterport



FLOOR 2

ENGEL & VÖLKERS

GROSS INTERNAL AREA
 FLOOR 1: 3,512 sq.ft. FLOOR 2: 288 sq.ft.
 EXCLUDED AREAS: PATIO 882 sq.ft., TERRACE 132 sq.ft., REDUCED HEIGHT ROOM 48 sq.ft.
 TOTAL: 3,800 sq.ft.
DEED AND ENCUMBRANCES ARE REPRESENTED BY A DOTTED LINE ONLY.

Matterport